

## Profile of Yasui Architects & Engineers

For more than 20 years, Yasui Architects & Engineers, Inc. has been ranked among 8 architectural firms with high revenue in Japan, which is shown in Nikkei Architecture Magazine. Also World Architecture magazine has been listing Yasui as large architectural firm with high revenue in the world.

Our goal of architectural design process is to "encourage people through architecture."

Yoshihiko Sano (1954- ), president/principal architect, guarantee quality of design and quality of design process for society, clients and all of the people.

Currently, Yasui Architects & Engineers, Inc. has 308 staff and 174 registered Architects (1st class kenchikushi). Three major office, Osaka, Tokyo and Nagoya office can provide complete service includes architectural design and Engineering.

Ongoing activities extends China, Vietnam and Netherlands. Moreover, our footprint remain at Philippine, the United States, Mexico, Canada, Brazil, Australia, North America, Italia, France, Great Britain.

## History of Yasui Architects & Engineers

Yasui Architects & Engineers was established in 1924 by Takeo Yasui (1884-1955).

After graduating Architectural department of Tokyo University, Yasui started his career at Manchuria (currently the province of Liaoning, China) in 1910. As architect/engineer of Manchurian Railroad co., he designed a lot of important buildings at Dalian and other cities. Several buildings are still alive and actively used.

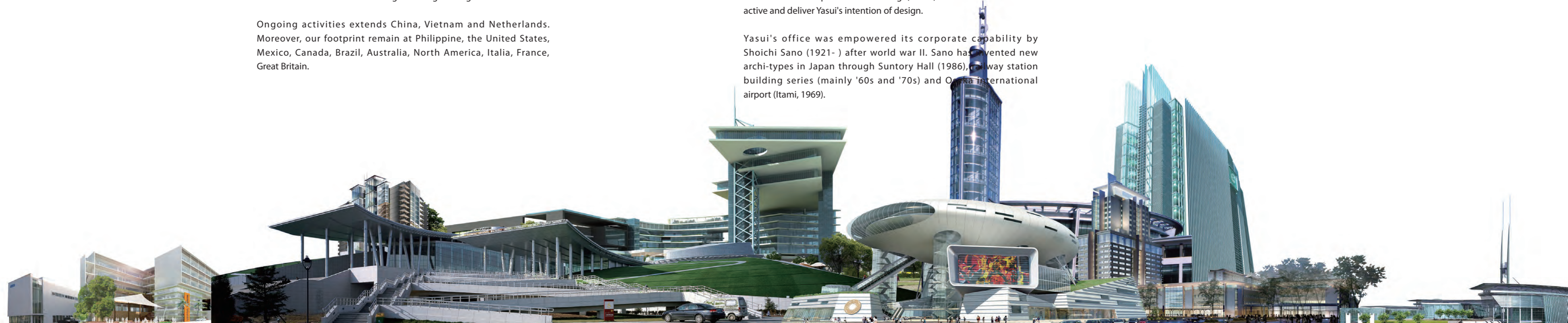
Yasui moved to Osaka and joined architectural firm of Yasushi Kataoka in 1920.

He confessed his way of design as "free-style". Under worldwide modernism age, Yasui developed "Japanese-style modernism" through his works including Osaka-club building (1924), Osaka-gas headquarters building (1933) and Nomura securities headquarters building (1930). Those ones are still active and deliver Yasui's intention of design.

Yasui's office was empowered its corporate capability by Shoichi Sano (1921- ) after world war II. Sano has invented new archi-types in Japan through Suntory Hall (1986), railway station building series (mainly '60s and '70s) and Osaka International airport (Itami, 1969).

## Type of Service

Architecture and Interior Design  
Structural Engineering and Design  
Equipment Engineering, Energy Management  
Supervision of Construction stage  
Feasibility Studies  
Master Planning and Landscape design  
Urban planning, Regional design  
Consulting, Due Diligence  
Construction Management  
Property Management  
Facility Management  
Computer Rendering/3D Capability  
Community Outreach



# SHENYANG FITNESS CENTER

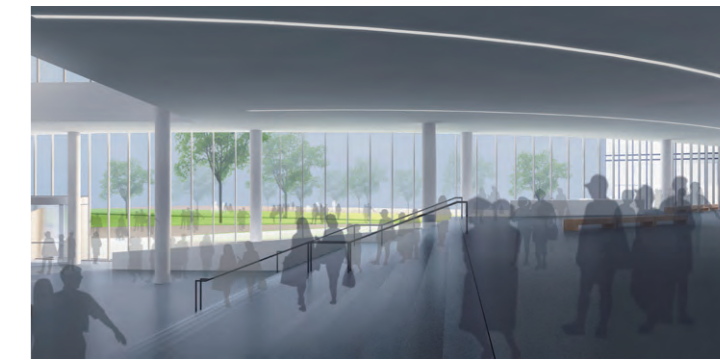
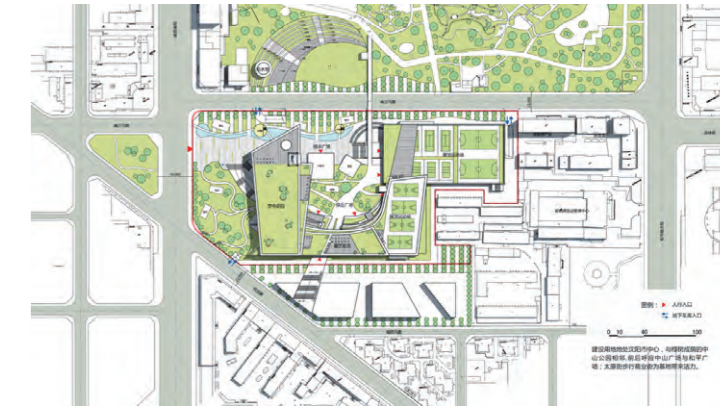
2010, Shenyang, China



## 公園と街をつなぐスポーツの広場

全国体育大会の重量挙げ会場として象徴性を与えつつ、スポーツを通じた市民の交流・憩いの場となるよう計画した。立体的な広場や屋内で行われるいろんなスポーツの楽しさが街にあふれ、思わず入りたくなるよう演出している。

(デザインパートナー：遼寧省建築設計研究院)



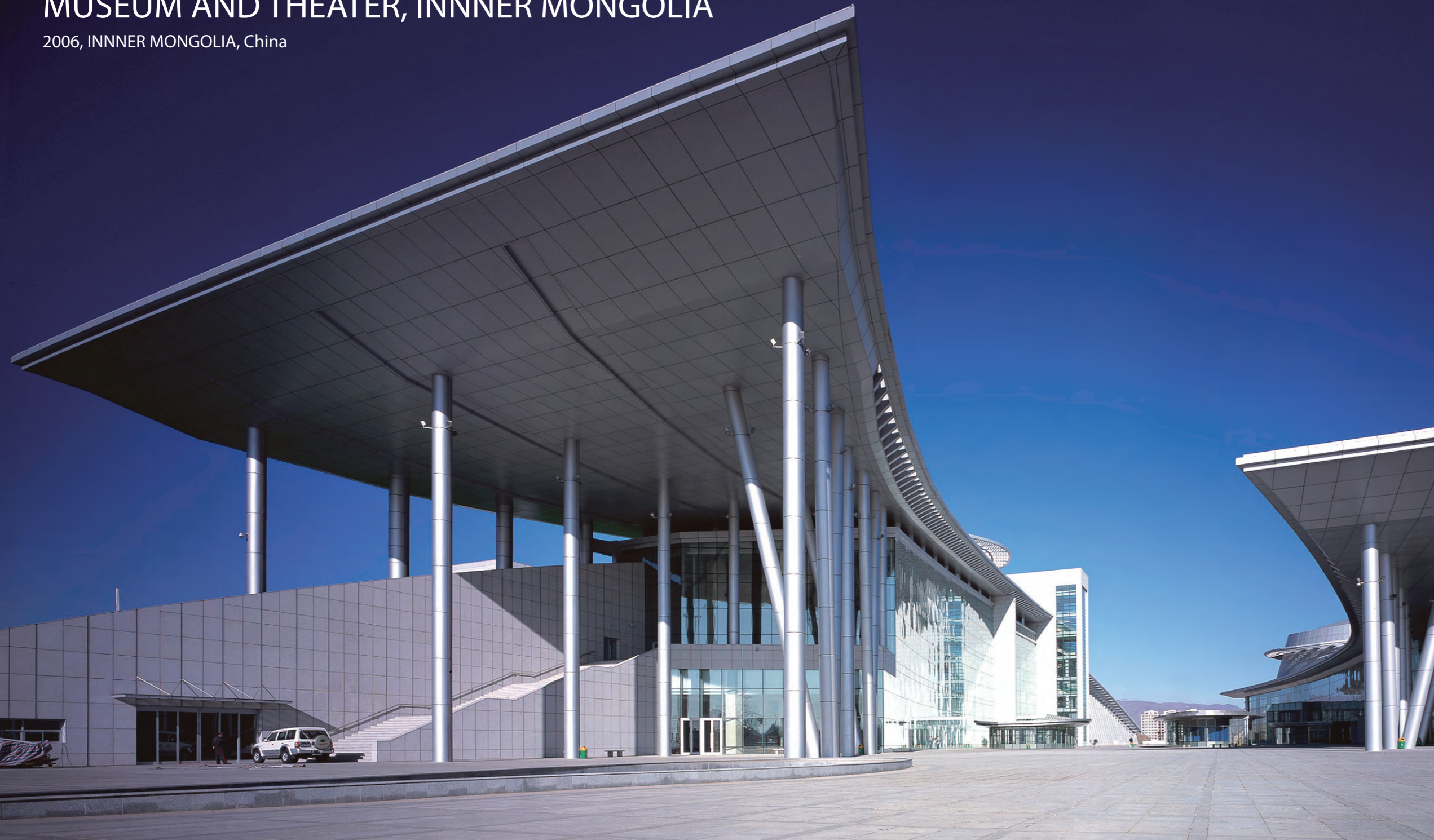
瀋陽市市民健康スポーツセンター  
瀋陽、中華人民共和國

2010  
INVITED COMPETITION, 2ND PRIZE  
FITNESS CENTER  
157,800 m<sup>2</sup>  
22



# MUSEUM AND THEATER, INNER MONGOLIA

2006, INNER MONGOLIA, China



## 草原を吹き渡る風と雲

多様な異文化との衝突と融合により繁栄してきた内蒙古の歴史・文化を理解し、草原の景観や気候・風土に配慮した公共文化空間として、「蒼き狼と白き牝鹿」伝説、「草原を吹き渡る風と雲」をモチーフにした空間を提案。

(デザインパートナー：株式会社大島設計、北京市建築設計研究院)

内蒙古大劇場博物館  
内蒙古自治区、中華人民共和國

2006  
COMPLETE, INVITED COMPETITION, 1ST PRIZE  
MUSEUM AND THEATER

04  
96,000 m<sup>2</sup>  
22



# DALIAN UNIVERSITY OF TECHNOLOGY

2004, DALIAN, China



## Eco Media Campus - 知の森 -

大連経済技術開発区の知と情報のシンボルとして計画された。先進性と自然と一体化した人間性豊かな環境をめざし、『Eco Media Campus - 知の森 -』をコンセプトとした緑と自然景観を大切にしたキャンパスを実現。

(デザインパートナー：大連理工大学建築設計院)



大連理工ソフトウェア学院  
大連、中華人民共和国

2004  
COMPLETE  
EDUCATIONAL BUILDING

06  
55,000 m<sup>2</sup>  
22



# ALL-CHINA GAMES RECEPTION CENTER

2010, LIAONING, China



## 自然と人との調和、人と人との調和

卓越した計画地の自然の特徴を丁寧に観察・分析し、その個性を最大限に活かしている。また地区のセキュリティを万全なものとしつつ、通常は一般市民もこの自然や施設を満喫できるゾーニング計画とした。  
(デザインパートナー：中国建築東北設計研究院、大連理工大学土木建築設計研究院)

遼寧・中国 12 回運動大会接待センター  
瀋陽、中華人民共和國

2010  
INVITED COMPETITION, 1ST PRIZE  
CONFERENCE CENTER, HOTEL AND OTHER RECEPTION FACILITIES

08  
550,000 m<sup>2</sup>  
22



# DALIAN DEVELOPMENT AREA, CULTURAL SQUARE

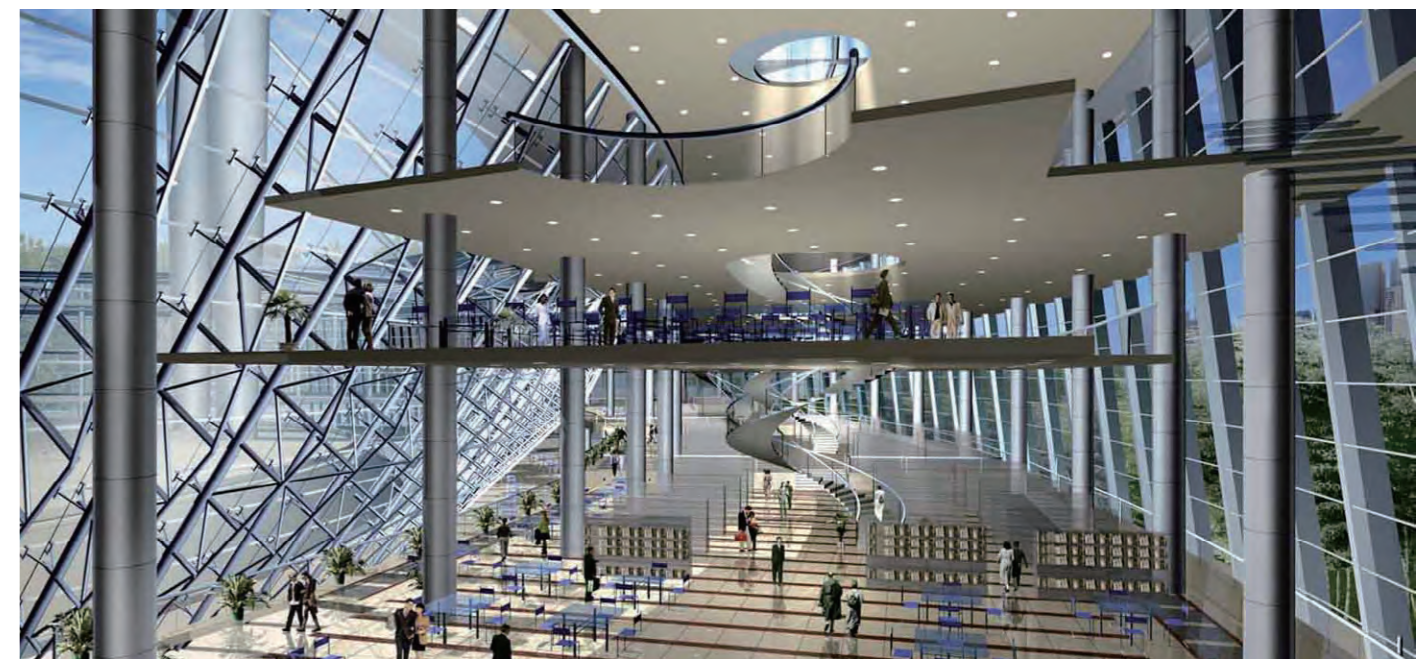
2001, DALIAN, China



## 中国古来の「天円地方」の思想

中国古来の「天円地方」の思想を形態に反映させ、建物下部を方形、上部を円形で構成している。広場を中心にしたすり鉢状のアトリウム空間でホール、図書館などを連続させ、施設全体の賑わいを増幅させている。

(デザインパートナー：大連理工大学建築設計院)



大連開発区文化広場  
大連、中華人民共和国

INVITED COMPETITION, 2ND PRIZE  
LIBRARY AND THEATER

10  
35,000 m<sup>2</sup>  
22



# TIAN FU THEATER

2006, CHENGDU, China



## 様々なイメージを喚起させる形

古来から重要な宝である「玉」や「翡翠」、金沙遺跡の出土古代楽器「石磬」、現代の携帯音楽プレーヤーなど様々なイメージを喚起させる特徴的な形態を、中心に据えて「蜀」文化のシンボルとなる建物とした。

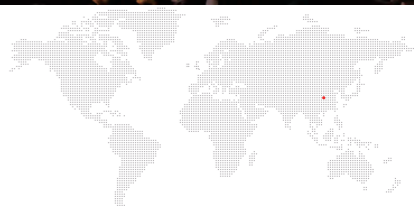
(デザインパートナー：株式会社大島設計)



成都市天府大劇場  
成都市、中華人民共和國

2006  
INVITED COMPETITION, 1ST PRIZE  
THEATER

60,000 m<sup>2</sup>  
22



# ANHUI MUSEUM

2006, ANHUI, China



## 老子的「道」の世界観

安徽が生んだ哲人、老子の「道」の世界観を表す「隠喩的」で「流動性」の高い、「時々刻々と変化する表情」を持つ建築空間を、徽州の古民居の建築工法から学び表現した。

(デザインパートナー：株式会社大島設計)

安徽省博物館  
安徽省、中華人民共和國

2005  
INVITED COMPETITION, 2ND PRIZE  
MUSEUM

14  
32,000 m<sup>2</sup>  
22





# YANDA HEALTH CITY

2006, HEBEI, China



## 多帯・多軸・多中心

伝統文化にみられる多帯・多軸・多中心の都市構造を基盤に、現代に求められる最新の総合医療、老人医療の機能を重ねた。

(デザインパートナー：株式会社大島設計)



燕達医院 老人介護福祉住宅  
河北省、中華人民共和國

2006

INVITED COMPETITION, 3RD PRIZE

MEDICAL FACILITIES AND SENIOR CARE RESIDENTIAL BUILDING

451,600 m<sup>2</sup>

16

22



# HANGZHOU UNITED BANK

2007, HANGZHOU, China



## 手のひらに包まれた空間

杭州の市の中心に位置する河岸の環境と共生しながら、「蓮の花」の形のような曲線描く壁、「合掌するかたち」が「聯合の意味」を強調し、手のひらに包まれた内部は開放的で高い融通性を備えた心地よい空間とした。

(デザインパートナー：株式会社大島設計)



杭州総合銀行  
杭州市、中華人民共和国

2007  
INVITED COMPETITION, 3RD PRIZE  
OFFICE BUILDING

18  
35,000 m<sup>2</sup>  
22



SHENYANG FITNESS CENTER



2010, Shenyang, China  
Fitness Center  
Design Partners:  
Liaoning Provincial Building  
Design & Reserch Institute

MUSEUM AND THEATER,  
INNER MONGOLIA



2007, Inner Mongolia, China  
Museum & Theater  
Design Partners:  
Oshima Sekkei, Inc.  
+  
Beijing Institute of Architectural Design

DALIAN UNIVERSITY OF  
TECHNOLOGY



2004, Dalian, China  
Educational Building  
Design Partners:  
The Design Institute of Civil  
Engineering & Architecture of DUT

ALL-CHINA GAMES  
RECEPTION CENTER



2010, Shenyang, China  
Conference Center, Hotel and  
Other Reception Facilities  
Design Partners:  
China Northeast Architectural Design  
+  
The Design Institute of Civil  
Engineering & Architecture of DUT

DALIAN DEVELOPMENT AREA  
CULTURAL SQUARE



2010, Dalian, China  
Library And Theater  
Design Partners:  
The Design Institute of Civil  
Engineering & Architecture of DUT

TIANFU THEATER CHENGDU



2006, Chengdu, China  
Theater  
Design Partners:  
Oshima Sekkei, Inc.

ANHUI MUSEUM



2006, Anhui, China  
Museum  
Design Partners:  
Oshima Sekkei, Inc.

YANDA HEALTH CITY



2006, Hebei, China  
Medical Facilities  
Design Partners:  
Oshima Sekkei, Inc.

HANGZHOU UNITED BANK



2007, Hangzhou, China  
Office Building  
Design Partners:  
Oshima Sekkei, Inc.

TSUBAKIMOTO CHAIN



2010, Busan, South Korea  
Factory

GLORY



2004, Suzhou, China  
Factory

BLIDGESTONE CORPORATION



2004, Chengzhou, China  
Factory

SEHENYANG AEROSPACE MITSUBISHI  
MOTORS ENGINE MANUFACTURING  
CO., LTD



2006, Shenyang, China  
Office Building

BEIJING HOTEL KONEUN CO., LTD



2008, Beijing, China  
Residential Building  
Design Partners:  
AGC Urban Design, Ltd.

TAOYUAN VILLAGE



2009, Dalian, China  
Residential Building  
Design Partners:  
The Design Institute of Civil  
Engineering & Architecture of DUT



WHERE DO YOU WANT TO DROP YOUR PIN? IT'S YOUR TURN.