



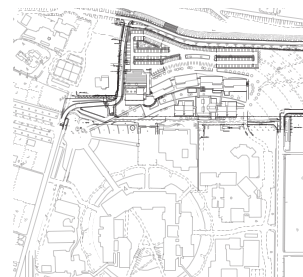
The University of Shiga Prefecture, School of Human Nursing



Bird's-eye View



Shiga Pref. Japan



Site Map

The project for the University of Shiga Prefecture has been developed by Professor Shozo Uchii in 1995. The main concept consists in a ring linking all the different faculties that's why this complex is also known as "moat ring". Planning the extension of this university we opted for realizing a second moat ring in order to respect and improve Shozo's main concept. Moreover, we connected the divided buildings with the eight already linked by communication decks and courtyards. It is in this way that we transformed in open-networks architecture typologies as villages. Applying the rules of bioclimatic architecture we optimized the solar illumination and the natural ventilation aiming to reduce the waste of energy as much as possible and,

consequently, lowering the running costs of the buildings. Besides, developing our idea, we took in high consideration the natural surroundings, the specific meteorological characteristics of the site (sun, wind, etc...) and the quality of the links among the other faculties, obtaining a project that expresses all the coexistence and the harmony with nature proper of Shiga Prefecture. In this project two apparently opposite aspects coexist in balance; the formal unity with the existing campus and functional independence from it. Iconic of the formal relation between the two projects are the spaces of varying size created by the division into wings (subelements) of the main body of the building and the expressiveness of the tiled

roof which lend the campus an air of peacefulness and richness. As hinted before, in fact, designing "Moat Village n. 2" we based our project on prof. Shozo Uchii's main concept sharing with it the same architectural language based on key elements as: village, roof, wall, garden, non-metallic, etc. Thanks to these points and to the rationalization achieved in the traffic line (to and from the existing facilities and in the links with the canteen and other communal areas) the whole project has got an outstanding spatial layout. On the technical side, due to guarantee high functional flexibility for the future, the large span sections have been realized in prestressed reinforced concrete. Several solutions have been used and de-

veloped for creating an eco-campus not reliant on heating and air-conditioning. Clear examples of those solutions are the long eaves (best solar illumination) and the smart-windows (for making full use of the natural ventilation). For concluding, the airflow roof used for solar heating and the piles geothermal system for cooling show the high-tech soul of the project.

Text : Yasui Architects & Engineers, INC.



Cortile



Detail : Edge of eaves (Practical Training Building)



Detail : Edge of eaves (Lecture Room)



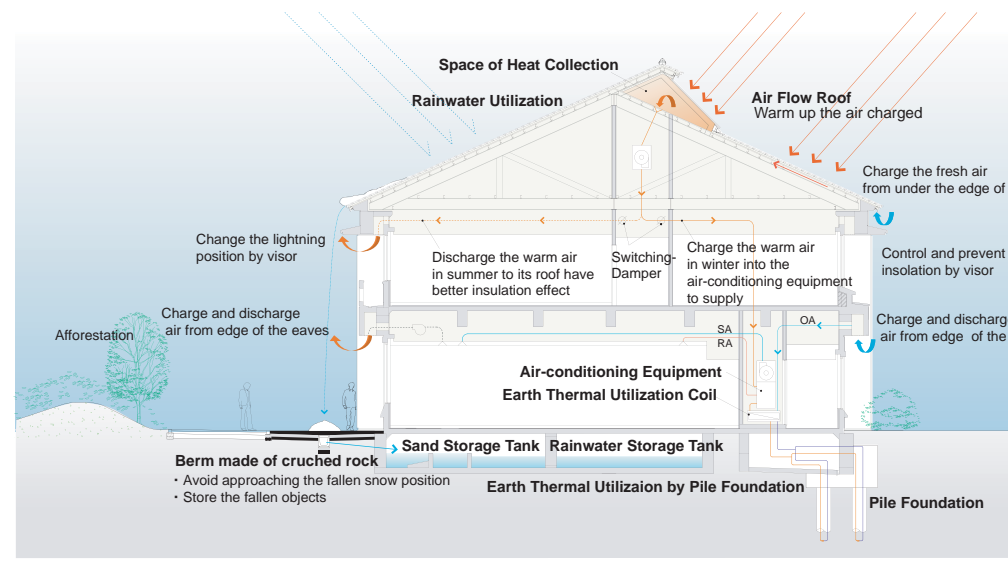
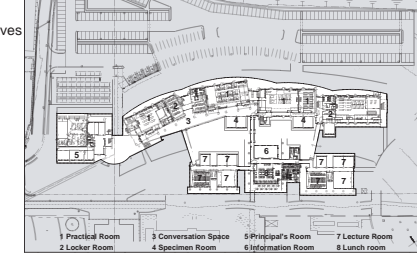
Lunch Room



Lecture Room



Disposition like a rural settlement



The University of Shiga Prefecture, School of Human Nursing -Outline
Location : Hikone City, Shiga Pref, Japan
Function : University
Site area : 336,805.70m²
Bldg area : 6,749.50m²
Total floor area : 8,218.00m²
Stories : 2FL
Structure : Reinforced concrete and partially steel
Contractor : Joint Venture Company of AKIMURA Co.,Ltd, HEIWAOKUDA Co.,Ltd and ITO Co.,Ltd
Year : 2004

YASUI ARCHITECTS & ENGINEERS, INC.

Profile of Yasui Architects & Engineers
 Yasui Architects & Engineers was established in 1924 by Takeo Yasui (1884-1955). He confessed his way of design as "free-style". Under world wide modernism age, Yasui developed "Japanese-style modernism" through his works.

Our goal of architectural design process is to "encourage people through architecture." Yoshihiko Sano (1954-), president/principal architect since 1997, guarantee quality of design and quality of design process for society, clients and all of the people. Currently, Yasui Architects & Engineers, Inc. has 298 staff and 177 registered Architects (1st class kenchikushi). Three major office, Osaka, Tokyo, and Nagoya

office can provide complete service including architectural design and Engineering.

HP Address
<http://www.yasui-archi.co.jp/index.html>
Overseas Unit Address
 Shanghai Unit : Oshima Sekkei / GLAnet
<http://www.oshima-glanet.com/>
 Beijing Unit : AGC URBAN DESIGN INC.
<http://www.riduad.com/>